

Memory (SO-DIMM RAM)

Installation Instructions

Be sure to follow the instructions in this sheet carefully. Failure to follow these instructions could result in damage to your equipment and may void your warranty.

Replacing memory in your computer requires five basic steps:

- Turn off the computer.
- Remove the battery, keyboard, AirPort Card, and RAM shield.
- Remove the SO-DIMM (if you are replacing it).
- Install the new SO-DIMM in its slot.
- Replace the RAM shield, AirPort Card, keyboard, and battery.

Note: A video version of the installation instructions is available at <http://www.info.apple.com/installparts>

Tools Required

- Jeweler's flat-blade screwdriver
- Phillips screwdriver

Electrostatic Discharge (ESD)

Static electricity, a normal and natural phenomenon, builds up on your body as you walk around. You experience an electrostatic discharge (ESD) when you touch an object and feel a spark. ESD can cause damage to the internal components of your computer.

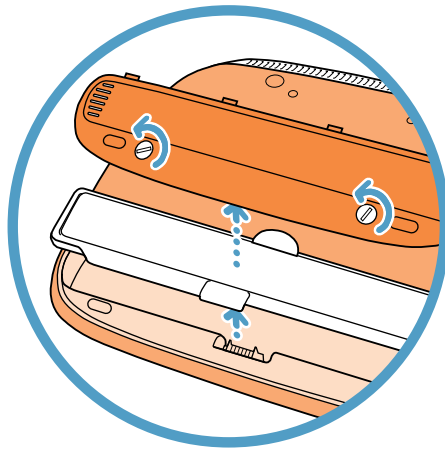
To avoid ESD damage, read and follow all instructions. If a grounding wrist strap is included with your replacement memory, refer to the instructions included for how to ground and use the strap.

About Memory

A memory card called a Small Outline Dual Inline Memory Module (SO-DIMM) provides memory to your computer. Your computer has one expansion slot that accepts a 1.25-inch (or shorter), 144-pin SO-DIMM RAM. You can add an additional 32, 64, or 128 MB of memory. For more information on installing memory, look in Mac Help, available in the Help menu.

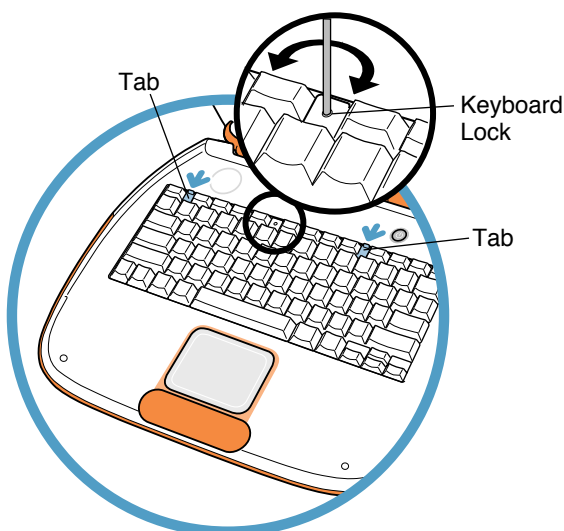
Installing the SO-DIMM RAM

- 1 Place your computer on a clean, flat surface. Shut down your computer, then disconnect all cables.
- 2 Turn over the computer and with a flat-blade screwdriver or a coin, turn the battery screws counterclockwise to release the battery door. Pull the battery pull tab to remove the battery.

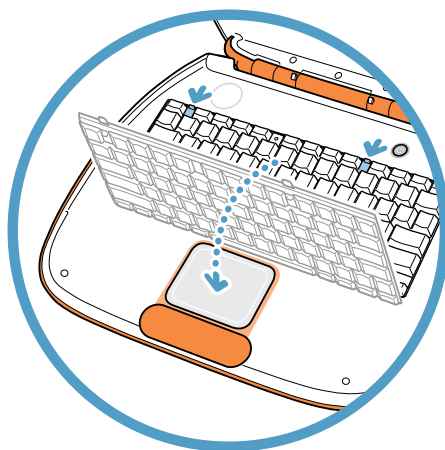


- 3 Release the keyboard by sliding the two plastic tabs away from the display.

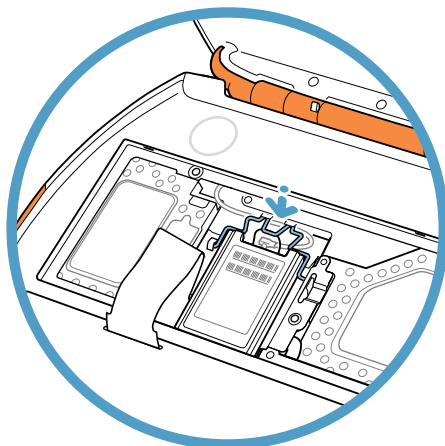
Note: If the keyboard does not pop up, it may be locked. Locate the keyboard lock next to the num lock key. Turn the lock a half turn in either direction until you can slide the plastic tabs away from the display.



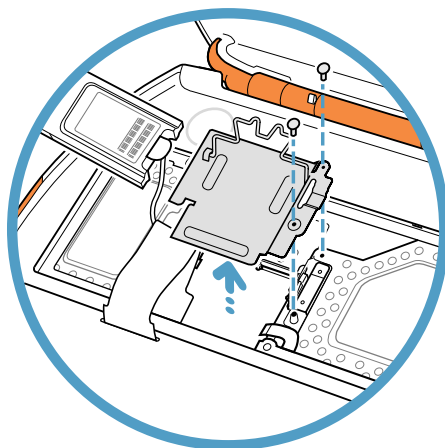
- 4 Lift up the keyboard, flip it over, and lay it on the palm rests and trackpad. Touch a metal surface inside the computer.



- 5 If necessary, flip up the wire bracket, and remove the AirPort Card from its connector. (It is not necessary to disconnect the AirPort antenna cable.)

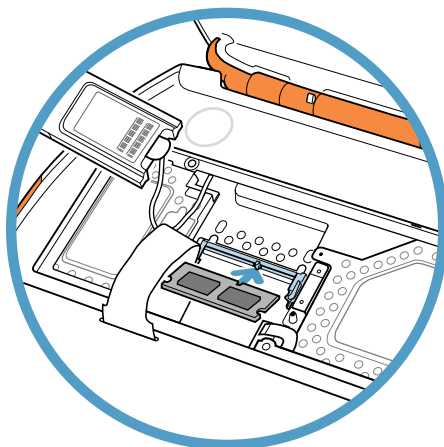


- 6 Remove the two screws that secure the RAM shield, then carefully lift it out.



- 7 Remove the RAM from its static-proof bag, taking care not to touch the connectors or chips. Insert the RAM into the slot at an angle and press down to lock it in place.

Note: If you are replacing an existing memory card, remove the RAM by flexing the metal clips outward until the RAM pops up at an angle. Then hold the RAM by the edges and remove it from the computer.



Closing the Computer

Refer to the illustrations on the previous pages to complete these steps.

- 1 Replace the RAM shield and secure it with the two screws.
- 2 Reinstall the AirPort Card into its connector, and secure it with the wire bracket. Ensure the antenna cable is tucked out of the way.
- 3 Flip the keyboard right side up, and secure it with the two plastic tabs.
- 4 Turn over the computer and reinstall the battery. Secure the battery door. Turn your computer upright and reconnect all cables.
- 5 Restart your computer.

Warning: Never turn on your computer unless all of its internal and external parts are in place and it is closed. Operating the computer when it is open or missing parts can damage your computer or cause injury.

Repackaging the RAM

If you are replacing memory as part of the Customer Installable Parts program (rather than upgrading memory), repackage the RAM you removed from the computer in the static-proof bag and box that you received with the replacement RAM. Seal the box with the tape included, and affix the return label.

Apple Computer, Inc.

© 2000 Apple Computer, Inc. All rights reserved.

Under the copyright laws, this document may not be copied, in whole or in part, without the written consent of Apple.

The Apple logo is a trademark of Apple Computer, Inc., registered in the U.S. and other countries. Use of the “keyboard” Apple logo (Option-Shift-K) for commercial purposes without the prior written consent of Apple may constitute trademark infringement and unfair competition in violation of federal and state laws.

Every effort has been made to ensure that the information in this document is accurate. Apple is not responsible for printing or clerical errors.

Apple Computer, Inc.
1 Infinite Loop
Cupertino, CA 95014-2084
408-996-1010
<http://www.apple.com>

Apple, the Apple logo, AirPort, and iBook are trademarks of Apple Computer, Inc., registered in the U.S. and other countries.