

Front Panel Board Replacement Instructions

Follow the instructions in this sheet carefully. Failure to follow these instructions could damage your equipment and void its warranty.

Note: Written and video instructions covering customer-installable parts are available at <http://www.info.apple.com/installparts/>.

Warning: During this procedure, keep small parts away from children.

Tools Required

The following tools are required for this procedure:

- #2 Phillips screwdriver
- Small flat-blade screwdriver
- Needlenose pliers

Opening the Computer

Warning: Always shut down your computer before opening it to avoid damaging its internal components or causing injury. After you shut down the computer, the internal components can be very hot. Let the computer cool down before continuing.

1. Place your computer on a clean, flat surface.
2. If you think your computer is in sleep, press the power button on the front of the computer to wake it.
3. Shut down your computer and wait five minutes before continuing.
4. If you attached a security cable through the computer's lockable cover latch, remove the cable.
5. Unplug all other cables from the computer except the power cord.

6. Touch the metal PCI access covers on the back of the computer. **(Figure 1)**

Figure 1



Important: To avoid electrostatic discharge, always ground yourself by touching the port access covers before you touch any parts or install any components inside the computer. To avoid static electricity building back up in your body, do not walk around the room until you have completed the installation and closed the computer.

7. Unplug the power cord.

Warning: The power supply in your computer is a high-voltage component and should not be opened for any reason, even when the computer is off. If the power supply needs service, contact your Apple reseller or Apple Authorized Service Provider.

8. Lift the latch on the right side access panel.
9. Gently lower the access panel until it lies flat. To avoid scratching the case, lower the panel onto a soft, clean cloth.

Warning: If you see any lights glowing on the main logic board, the computer has not been shut down. Close the side access panel and shut down the computer before proceeding.

Removing the Installed Board

1. Loosen the captive screw near the upper corner of the optical drive carrier. **(Figure 2)**
2. Remove the lower screw that secures the optical drive carrier to the chassis.

Figure 2



3. Slide the back panel off the carrier. **(Figure 3)**

Figure 3



- Slide the carrier back and rotate it so that you can reach the drive cables.
- Disconnect the drive data and power cables (P6 and P7) from the back of the optical drive(s) and remove the carrier from the computer. **(Figure 4)**

Figure 4



- Press in and release the top two latches on the inside of the optical drive bezel.
- Press in and release the bottom two latches. **(Figure 5)**

Figure 5



8. Remove the bezel from the computer. **(Figure 6)**

Figure 6



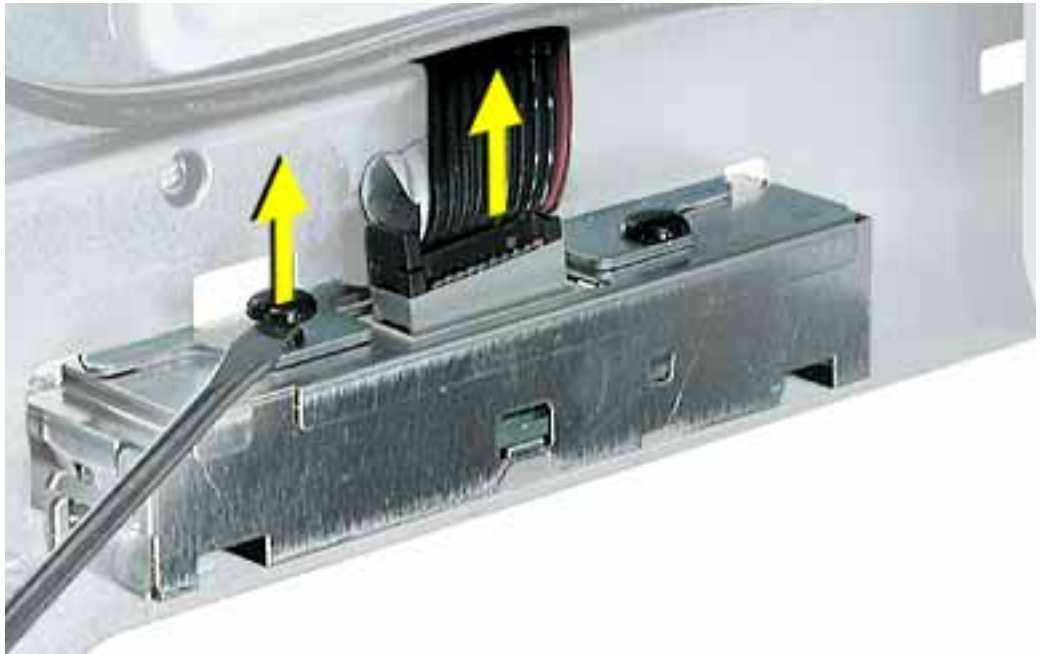
9. Locate the installed front panel board. **(Figure 7)**

Figure 7



10. Disconnect the front panel board cable from the front panel board.
11. Using a small flat-blade screwdriver, pry up the two black plastic pegs and then the two black plastic peg holders from the top of the front panel board. **(Figure 8)**

Figure 8



12. Using a Phillips screwdriver, remove the front panel board mounting screw. **(Figure 9)**
13. Remove the front panel board through the front opening in the computer.

Figure 9



Installing the Replacement Board

1. Insert the front panel board through the opening at the front of the computer, and install the screw.
2. Use needlenose pliers to compress the peg holders so they will fit into the holes in the top of the front panel board. **(Figure 10)**

Figure 10



3. Replace the two pegs, and connect the front panel board cable connector to the front panel board.
4. Reinstall the optical drive bezel.

5. Reinstall the optical drive carrier as follows.

Replacement Note: Before sliding the carrier back onto the optical drive shelf, make sure the power cable bundle at the side panel is routed in the recessed channel.

(Figure 11)

Figure 11



Replacement Note: When sliding the carrier back onto the optical drive shelf, make sure the latch on the underside of the carrier engages with the notch in the drive shelf. **(Figure 12)**

Figure 12



Replacement Note: Before sliding the rear panel back onto the carrier, make sure the top lip of the panel engages with the top edge of the drive carrier. **(Figure 13)**

Warning: Be careful not to pinch the power cable between the panel and the carrier.

Figure 13



Closing the Computer

1. Raise the side access panel, lift the latch, and press the panel against the case until it snaps securely into place.
2. Reconnect all cables and restart your computer.

Warning: Never turn on your computer unless all of its internal and external parts are in place and it is closed. Operating the computer when it is open or missing parts can damage your computer or cause injury.

🍏 Apple Computer, Inc.

© 2003 Apple Computer, Inc. All rights reserved.

Under the copyright laws, this document may not be copied, in whole or in part, without the written consent of Apple.

The Apple logo is a trademark of Apple Computer, Inc., registered in the U.S. and other countries. Use of the “keyboard” Apple logo (Option-Shift-K) for commercial purposes without the prior written consent of Apple may constitute trademark infringement and unfair competition in violation of federal and state laws.

Every effort has been made to ensure that the information in this document is accurate. Apple is not responsible for printing or clerical errors.

Apple Computer, Inc.
1 Infinite Loop
Cupertino, CA 95014-2084
USA
+ 1 408 996 1010
<http://www.apple.com>

Apple, the Apple logo, Mac, Macintosh, and the Mac logo are trademarks of Apple Computer, Inc., registered in the U.S. and other countries.

Power Mac is a trademark of Apple Computer, Inc.