

Battery Replacement Instructions

Follow the instructions in this sheet carefully. Failure to follow these instructions could damage your equipment and void its warranty.

Note: Written and video instructions covering customer-installable parts are available at <http://www.info.apple.com/installparts/>.

Tools Required

- a plastic flat-blade screwdriver to pry the battery from the battery holder

Opening the User Access Door

1. Save all open documents and quit all open applications.
2. Turn the computer off by choosing Shut Down from the Special menu (if using Mac OS 9), or choose Shut Down from the Apple menu (if using OS X).
3. Unplug all cables, except the power cord, from the computer. **Warning:** If the internal modem is connected to a telephone line, disconnect the telephone line from the internal modem port before you open the user access door. This prevents electric shock. (Figure 1)

Figure 1



-
4. Place a soft towel or cloth on the desk or surface. Position the computer so the screen is facing down on the cloth.
 5. Use a Phillips screwdriver to remove the screw on the user access door. Set the user access door aside. (Figure 2)

Figure 2



-
6. Touch the metal surface on the back of the computer. (Figure 3) This helps protect the computer from damage caused by electrostatic discharge.

Figure 3



Important: To avoid electrostatic discharge, always ground yourself by touching metal before you touch any parts or install components inside the computer. To avoid generating static electricity, do not walk around the room until you have finished installing the battery and closed the computer.

7. Unplug the power cord.

Replacing the Battery

1. Locate the battery. (Figure 4)

Figure 4



2. Note the orientation of the battery's positive (+) end.
3. Remove the battery from its holder. (Figure 5) Carefully use a plastic flat-blade screwdriver to pry the battery out of the holder.

Warning: Batteries contain chemicals, some of which may be harmful to the environment. Please dispose of used batteries according to your local environmental laws and guidelines. Do not return used batteries to Apple.

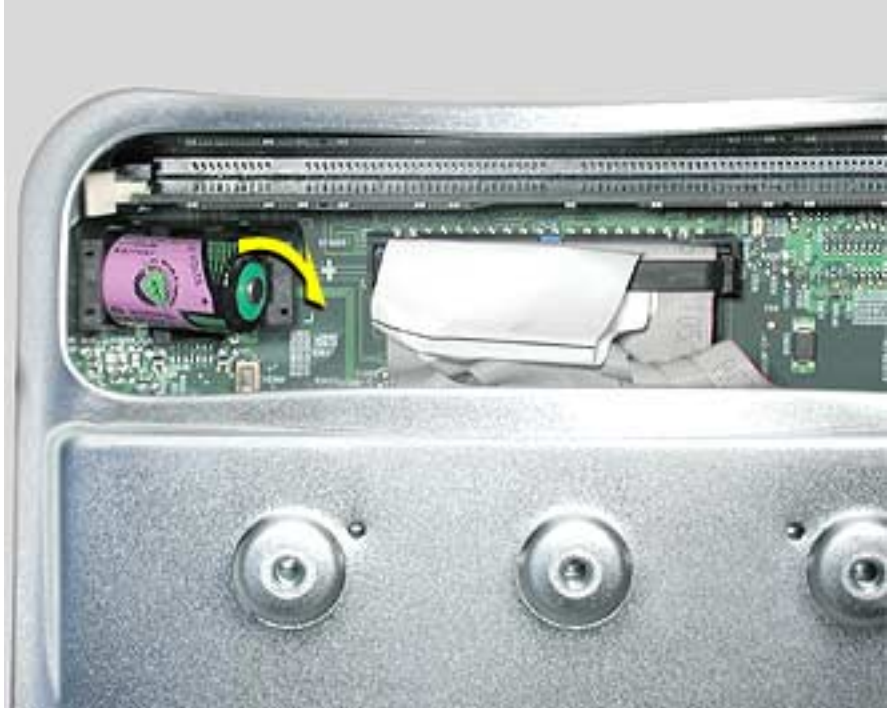
Figure 5



-
4. Insert the new battery into the holder, making sure the battery's positive and negative signs align with those on the logic board. (Figure 6)

Warning: Be sure the battery's positive and negative poles are correctly oriented in the holder.

Figure 6



Closing the User Access Door

1. Replace the screw on the user access panel (Figure 7)

Figure 7



2. Carefully turn the computer right side up.
3. Reconnect the power cable. **Important:** When connecting the power cord, first plug the cord into your eMac, then plug the other end into an electrical outlet or power strip.
4. Press the power button to restart your computer.

Warning: Never turn on the computer unless all of its internal and external parts are in place and it is closed. Operating the computer when it is open or missing parts can damage your computer or cause injury.

🍏 Apple Computer, Inc.

© 2004 Apple Computer, Inc. All rights reserved.

Under the copyright laws, this document may not be copied, in whole or in part, without the written consent of Apple.

The Apple logo is a trademark of Apple Computer, Inc., registered in the U.S. and other countries. Use of the “keyboard” Apple logo (Option-Shift-K) for commercial purposes without the prior written consent of Apple may constitute trademark infringement and unfair competition in violation of federal and state laws.

Every effort has been made to ensure that the information in this document is accurate. Apple is not responsible for printing or clerical errors.

Apple is not responsible for typographical, printing, or inadvertent errors.

Apple Computer, Inc.
1 Infinite Loop
Cupertino, CA 95014-2084
USA
+ 1 408 996 1010
<http://www.apple.com>

Apple, the Apple logo, Mac, Macintosh, and the Mac logo are trademarks of Apple Computer, Inc., registered in the U.S. and other countries. Power Mac is a trademark of Apple Computer, Inc.

Power Mac is a trademark of Apple Computer, Inc.