

AirPort Extreme Card Replacement Instructions

Follow the instructions in this sheet carefully. Failure to follow these instructions could damage your equipment and void its warranty.

Note: Online instructions are available at <http://www.info.apple.com/installparts/>.

Tools Required

No tools are required for this procedure.

Opening the Computer

1. Shut down the computer.

Warning: Always shut down the computer before opening it to avoid damaging its internal components or the components you are installing. Do not open the computer or attempt to install items inside it while it is on.

2. Wait 5 to 10 minutes to allow the computer's internal components to cool.

Warning: After you shut down the system, the internal components can be very hot. You must let the computer cool down before continuing.

3. Unplug all external cables from the computer except the power cord.
4. Touch the metal PCI access covers on the back of the computer to discharge any static electricity from your body. **(Figure 1)**

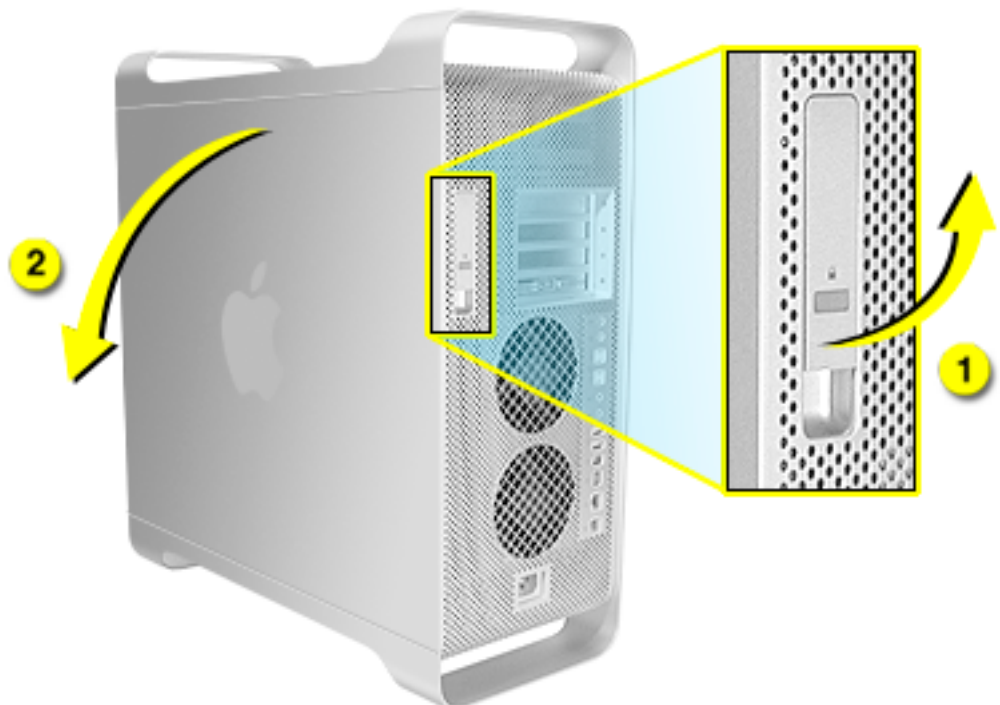
Important: Always discharge static before you touch any parts or install any components inside the computer. To avoid generating static electricity, do not walk around the room until you have finished working and closed the computer.

Figure 1



5. Unplug the power cord.
6. Hold the side access panel and lift the latch on the back of the computer. **(Figure 2)**
Warning: The edges of the access panel and the enclosure can be sharp. Be very careful when handling them.
7. Remove the access panel and place it on a flat surface covered by a soft, clean cloth.

Figure 2



-
8. Remove the air deflector and place it on a soft, clean cloth. **(Figure 3)**

Figure 3

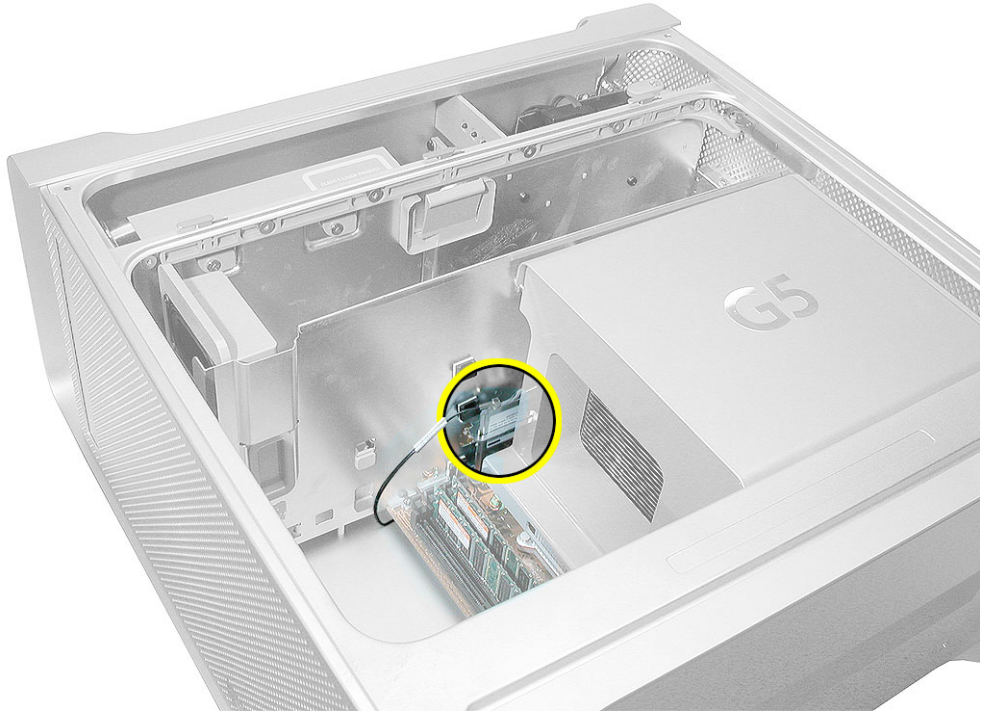


Important: Always remember to replace the air deflector after you have finished working inside your computer. The Power Mac G5 computer will not function properly if the air deflector is not replaced.

Removing the Installed AirPort Extreme Card

1. Locate the AirPort Extreme Card inside the computer. (Figure 4)

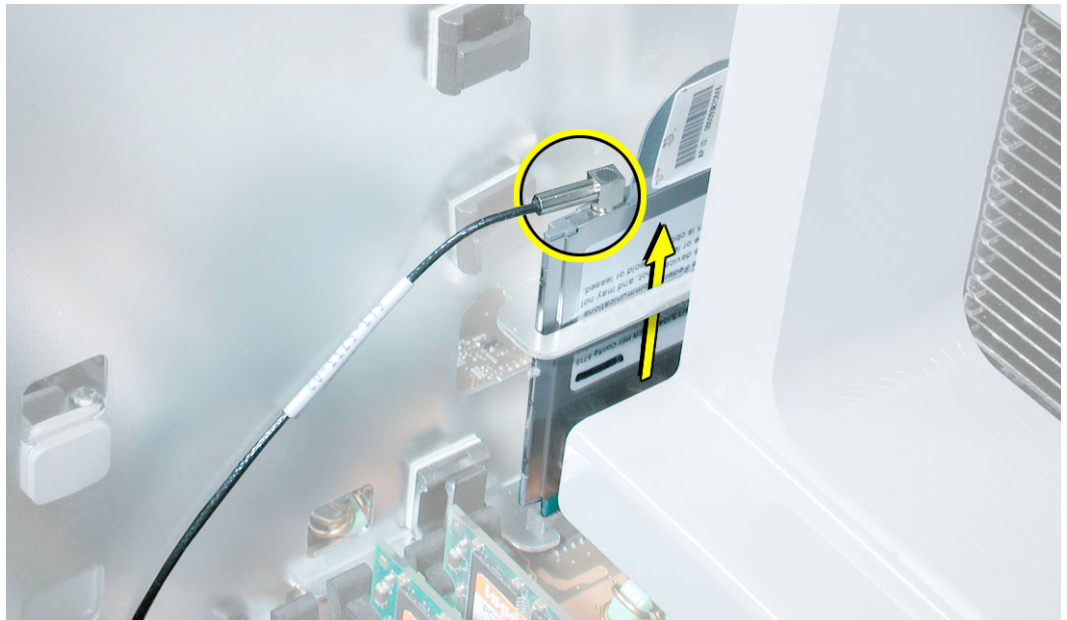
Figure 4



2. Carefully lay the computer on its side so that the open side faces up.

3. Disconnect the antenna cable from the end of the installed AirPort Extreme Card.
(Figure 5)
4. Pull the card straight back out of the enclosure.

Figure 5

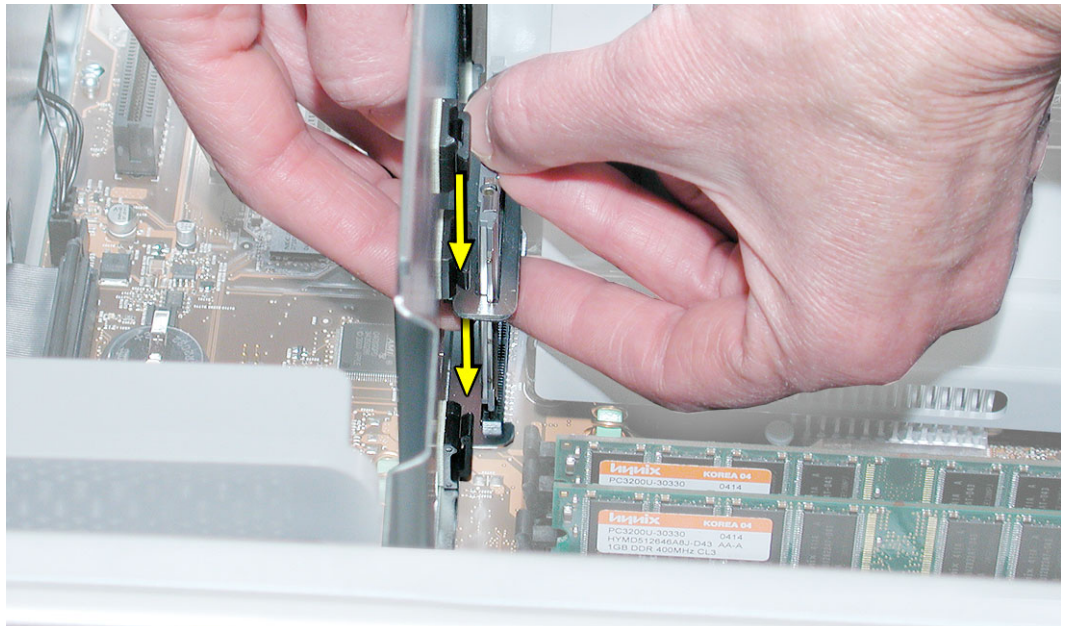


Installing the Replacement AirPort Extreme Card

Important: Only the AirPort Extreme Card may be installed in the Power Mac G5. Older AirPort Cards do not work in this computer.

1. Placing a hand on each side of the card, guide the card down into the logic board connector, making sure to align the front edge of the card's connector with the front of the logic board connector. **(Figure 6)**
2. Reconnect the antenna cable to the card.

Figure 6



Closing the Computer

1. Replace the air deflector by inserting the three tabs on the bottom edge of the deflector into the three slots in the bottom frame of the enclosure. Then swing the deflector up flush against the top frame.

Important: Make sure you re-install the air deflector before replacing the access panel. If the air deflector is not installed, the computer will not function properly.

2. Replace the access panel.

Note: Make sure the latch is in the up position before replacing the access panel. If the latch is down, the access panel will not seat correctly in the enclosure.

3. Push the latch down to close and secure the access panel.

Warning: Never turn on the computer unless all of its internal and external parts are in place and it is closed. Operating the computer when it is open or missing parts can damage it or cause injury.

 **Apple Computer, Inc.**

© 2004 Apple Computer, Inc. All rights reserved.

This document is protected under U.S. Copyright Law and International Treaties, and no part of this document may be reproduced in any form without written permission from Apple.

Apple is not responsible for typographical, printing, or inadvertent errors.

Apple Computer, Inc.
1 Infinite Loop
Cupertino, CA 95014-2084
USA
+ 1 408 996 1010
<http://www.apple.com>

Apple, the Apple logo, Mac, Macintosh, and the Mac logo are trademarks of Apple Computer, Inc., registered in the U.S. and other countries.