

RAM Door (L-Bracket) Replacement Instructions

Follow the instructions in this document carefully. Failure to follow these instructions could damage your equipment and void its warranty.

Online instructions are available at <http://www.apple.com/support/diy/>.

Note: These instructions apply to different models of the MacBook (13-inch) portable computer. While some models may look slightly different from the one shown in the illustrations, the steps for all models are the same.

Tools Required

The following tools are required:

- Clean, soft, lint-free cloth
- Coin
- Phillips #1 screwdriver (preferably with a long handle)
- Stiff, plastic, nonmagnetic card (such as a library card)

Opening the Computer

1. Shut down the computer.
Warning: Always shut down the computer before opening it to avoid damaging its internal components or causing injury. After you shut down the computer, the internal components can be very hot. Let the computer cool down for 30 minutes before continuing.
2. Wait 30 minutes to allow the computer's internal components to cool.
3. Unplug all external cables from the computer except the power cord.

-
4. Unplug the power cord.

Warning: The power adapter for your computer is a high-voltage component and should not be opened for any reason, even when the computer is off. If the power adapter needs service, contact your Apple reseller or Apple Authorized Service Provider.

5. Turn over the computer and place it on a soft cloth.
6. Use a coin to release the battery latch. Turn the coin a quarter turn clockwise to unlock the battery.



7. Lift out the battery from the battery bay.

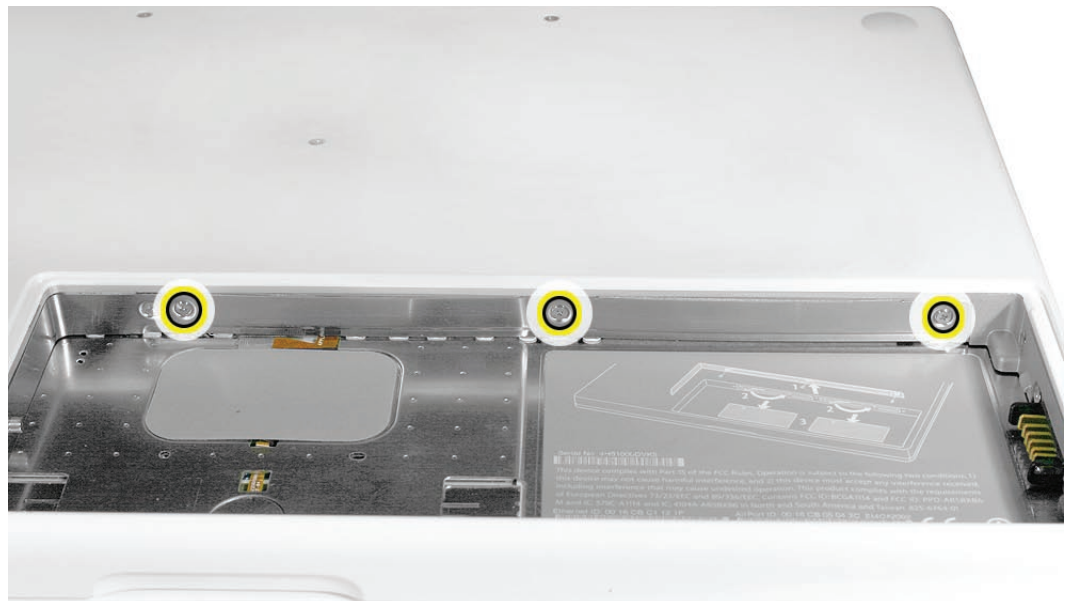


8. Touch a metal surface inside the battery bay to discharge any static electricity.
Important: Always discharge static before you touch any parts or install any components inside the computer. To avoid generating static electricity, do not walk around the room until you have finished working and closed the computer.



Removing the RAM Door

1. Loosen—but do not try to remove—the three captive screws along the RAM door.



-
2. Holding the long end of the L-shaped RAM door, pivot it out from the battery bay. If necessary, use a nonmagnetic, plastic card (such as a library card) to tilt the RAM door up and out of the battery bay. Be careful not to bend the RAM door.



3. **Important:** The computer will not function properly if the RAM door is not replaced.



Replacing the RAM Door

1. Install the replacement RAM door by first aligning the short end at the notch near the hard drive opening.



2. Use a plastic card, if necessary, to tuck in the EMI gaskets located on the RAM door so they do not protrude from the edge of the battery bay. Make sure the three screws align with the holes in the bottom case before tightening them.

Closing the Computer

1. Replace the battery by tilting the foot end of the battery into the battery bay first. Then press and hold down the other end of the battery as you turn the coin to lock it into place.



-
2. Connect the power cord.

Warning: Never turn on the computer unless all of its internal and external parts are in place and it is closed. Operating the computer when it is open or missing parts can damage it or cause injury.

3. Restart your computer.

 Apple Computer, Inc.

© 2006 Apple Computer, Inc. All rights reserved.

Under the copyright laws, this document may not be copied, in whole or in part, without the written consent of Apple.

Every effort has been made to ensure that the information in this document is accurate. Apple is not responsible for printing or clerical errors.

Apple
1 Infinite Loop
Cupertino, CA 95014-2084
USA
+ 1 408 996 1010
<http://www.apple.com>

Apple, the Apple logo, Mac, Macintosh, and MacBook are trademarks of Apple Computer, Inc., registered in the U.S. and other countries.